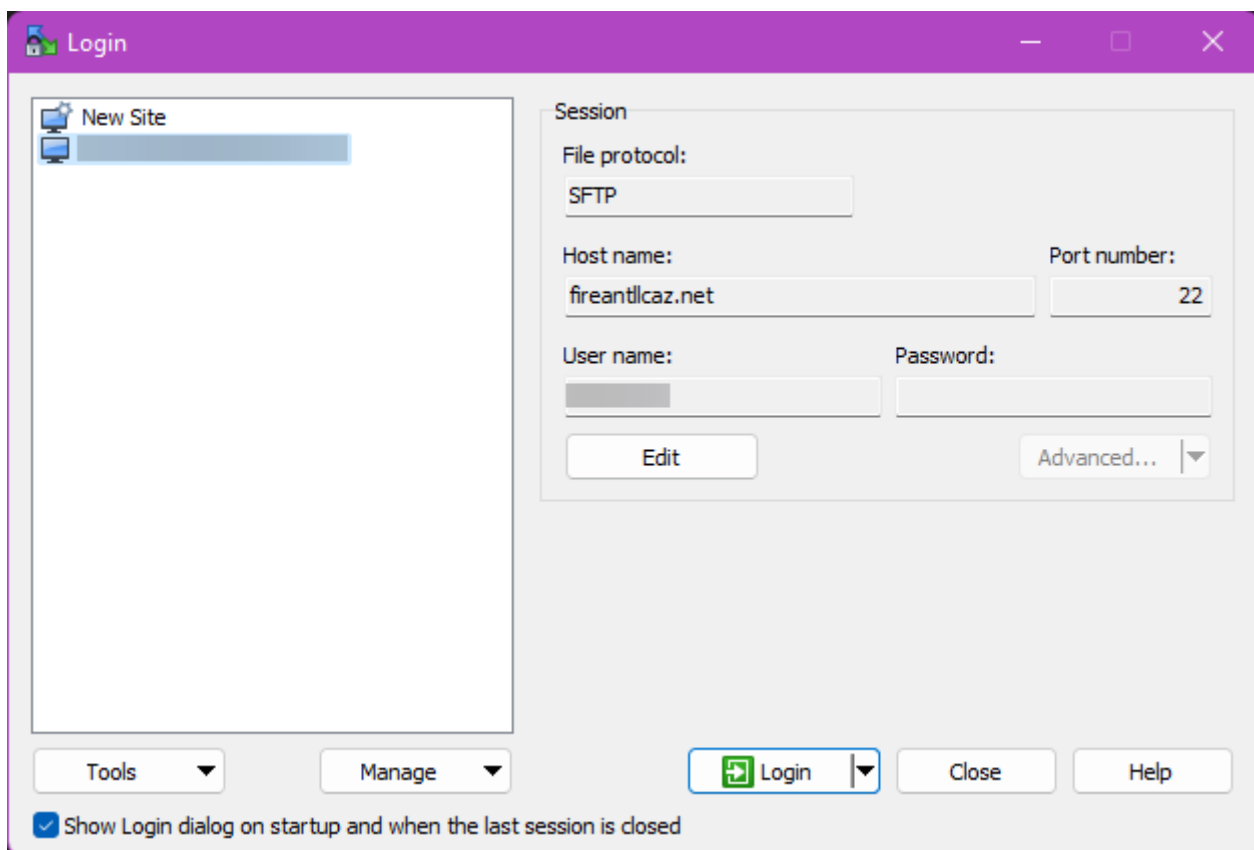


Connecting via SSH in a File Explorer

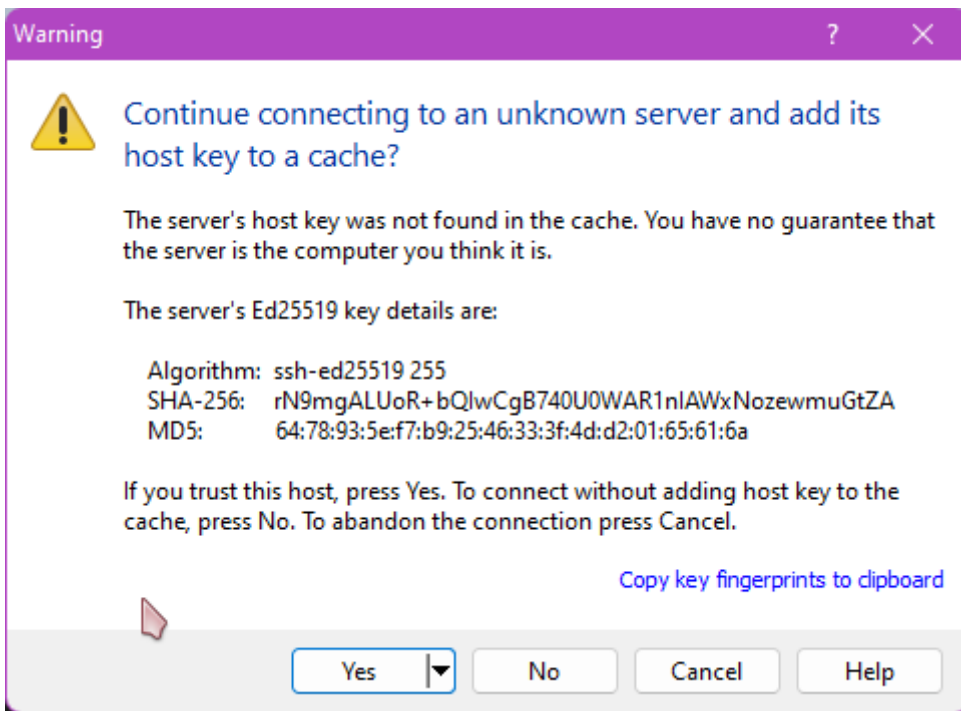
In order to browse server files in a local file browser, you'll first need a program that supports the SCP protocol. For this guide, I'll be using **WinSCP**.

If you launch WinSCP for the first time, you'll be presented with login options. Here are what you should set the options...

- File Protocol:
- Host name:
- Port number:
- User name:
- Password:



Upon your first time connecting, you'll get a warning that you're connecting to an unknown server and be asked whether or not to save the host's key to cache. Click .



And there you go! You're in!

Revision #2

Created 13 October 2022 22:21:53 by Alexander Anthis

Updated 13 October 2022 22:33:20 by Alexander Anthis