

Connecting via SSH

- [Connecting via SSH in a Terminal](#)
- [Connecting via SSH in a File Explorer](#)

Connecting via SSH in a Terminal

In a terminal, you only need to type in this command...

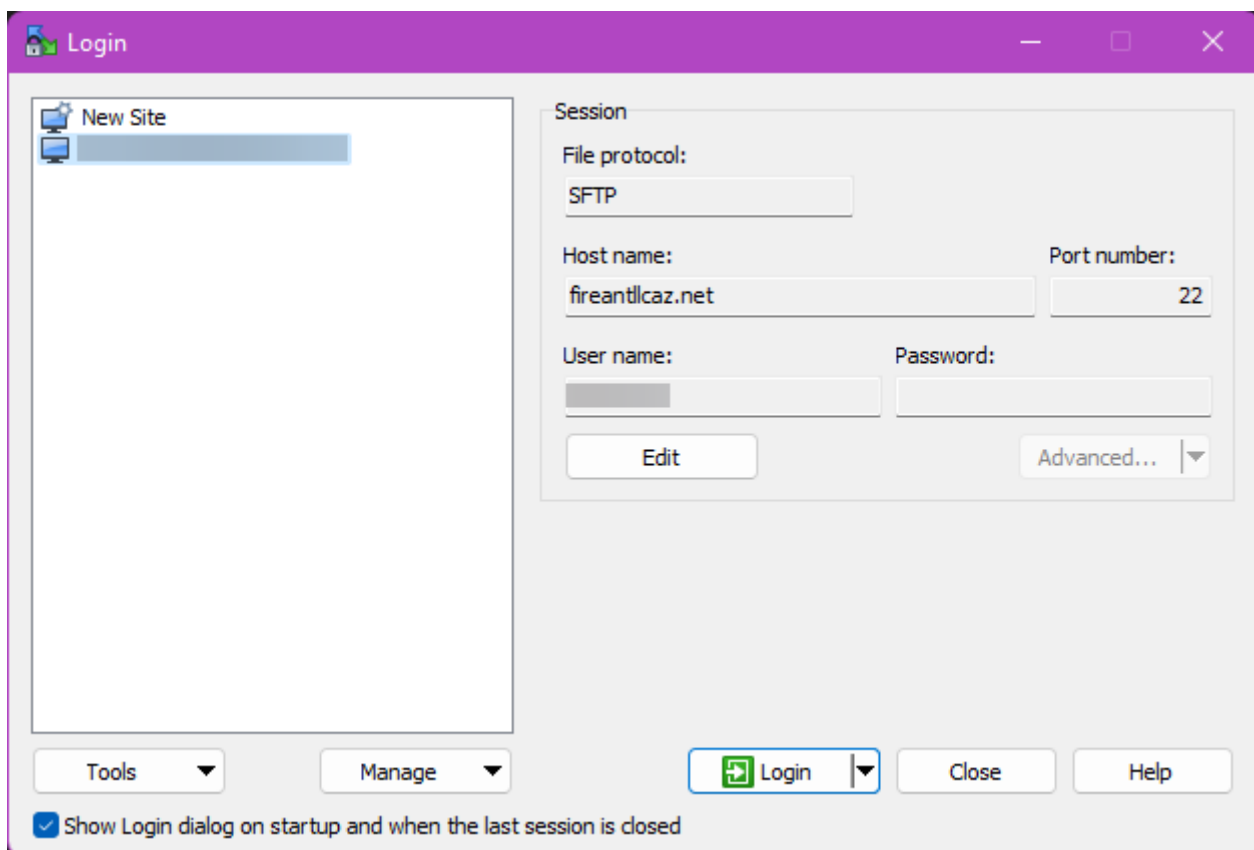
```
ssh <your_username>@fireantllcaz.net
```

Connecting via SSH in a File Explorer

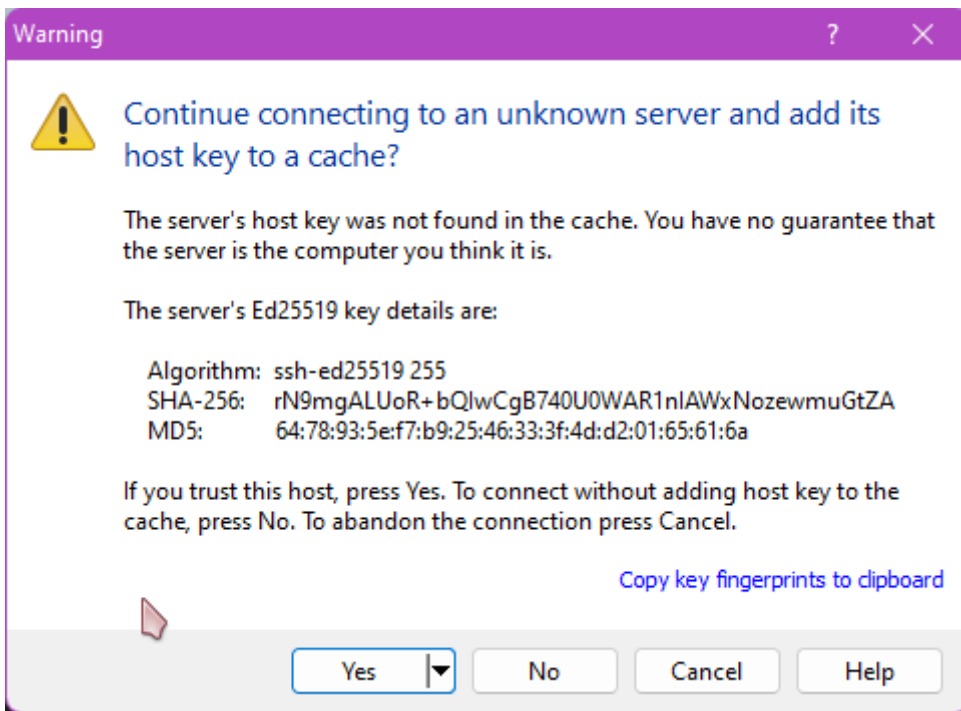
In order to browse server files in a local file browser, you'll first need a program that supports the SCP protocol. For this guide, I'll be using [WinSCP](#).

If you launch WinSCP for the first time, you'll be presented with login options. Here are what you should set the options...

- File Protocol: `SFTP`
- Host name: `fireantllcaz.net`
- Port number: `22`
- User name: `<your_username>`
- Password: `<your_password>`



Upon your first time connecting, you'll get a warning that you're connecting to an unknown server and be asked whether or not to save the host's key to cache. Click `Yes`.



And there you go! You're in!